



**Subject:** *Crosswalk - Highway 2, Enfield*  
**To:** Executive Committee  
**Date Prepared:** August 29, 2024  
**Related Motions:** C24(264), C24(215)  
**Prepared by:** Jesse Hulsman, Director of Infrastructure & Operations  
**Approved by:** Kim Ramsay, Chief Administrative Officer

### Summary

There is an approved capital project to install a crosswalk along Highway 2, Enfield. The project is listed on the 5-year Capital Budget as Project #21-033, with an approved budget of \$145,000.

Staff are seeking alignment with Council prior to going to tender for construction on this project. New information has become available related to potentially large infrastructure changes for the area in the future. Prior to spending public funds on this project, this new information is being brought forward for consideration to enable either a change in direction for the project or an alignment on proceeding with all parties now aware of the same information.

### Financial Impact Statement

\$145,000 of funding already approved in the Capital Budget

Design Cost committed - \$13,395 + HST

Updated construction estimate - \$93,000 + HST

### Recommendation

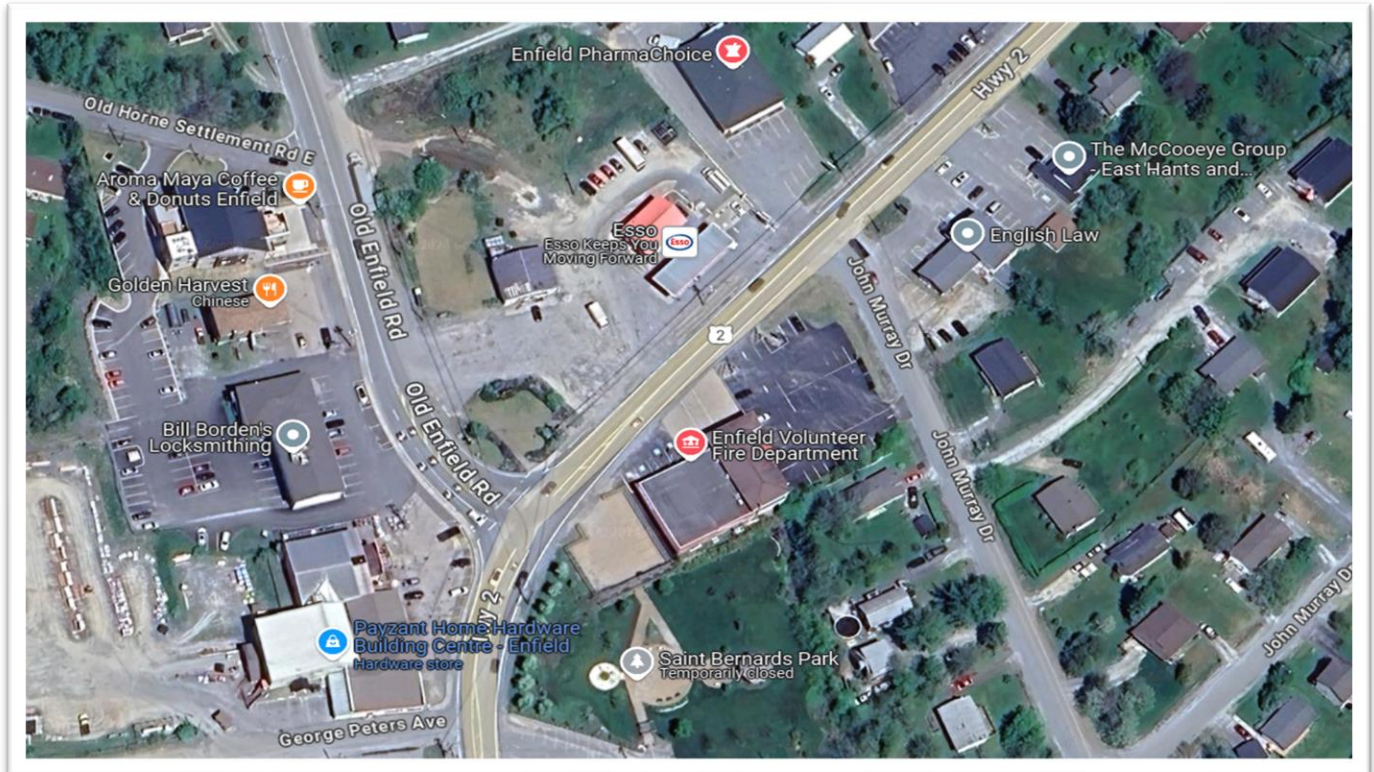
With this project being a priority of Council for over a decade, and no certainty on timing or exact details of the potential risks flagged in the report, staff would still recommend to proceed with the project.

### Recommended Motion (options)

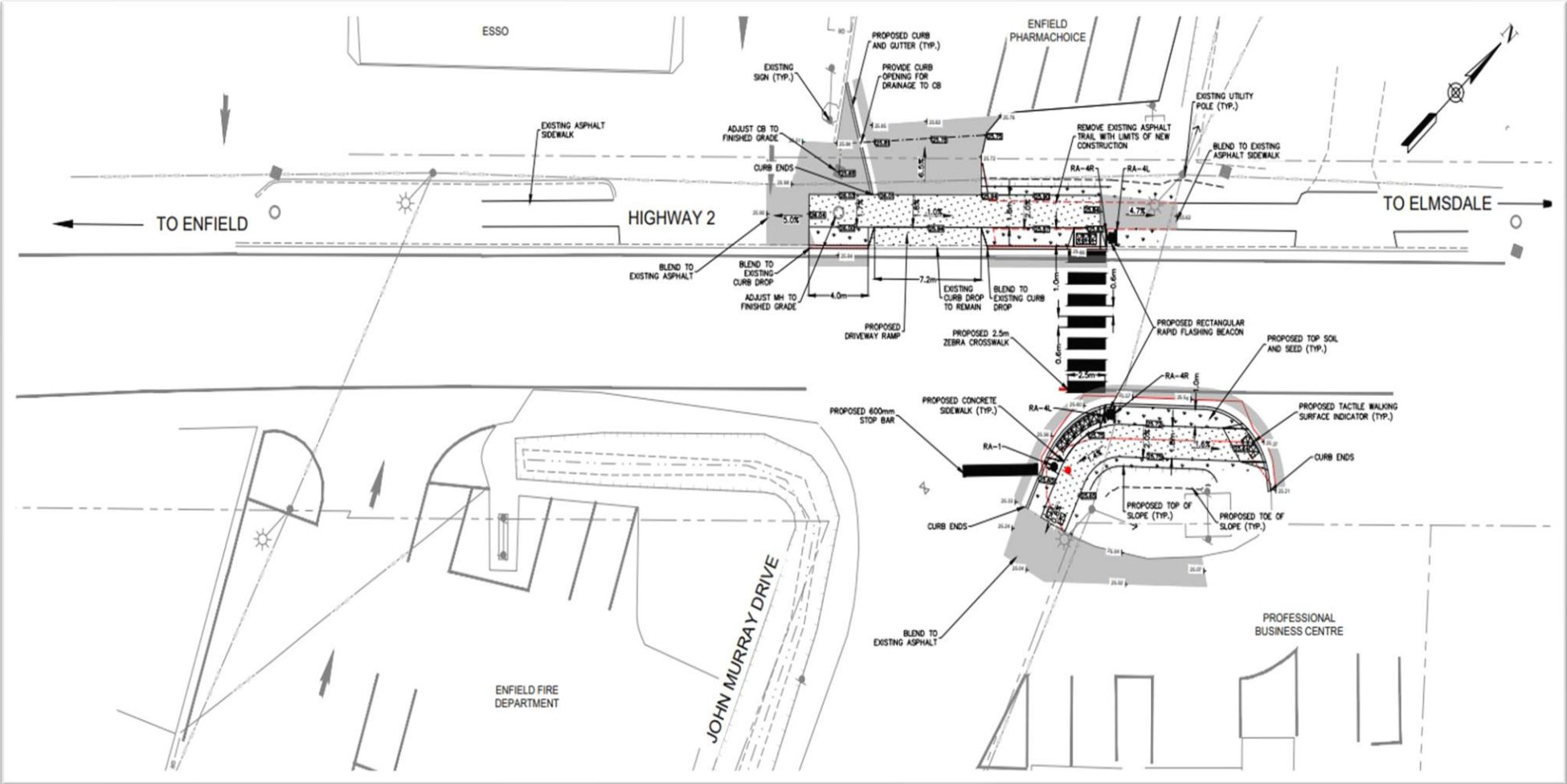
*Move that the Infrastructure & Operations Committee recommend that Council continue Project 21-033, to complete the crosswalk project in Enfield with the awareness of the future potential infrastructure changes to the area.*

## Background

### Visual of Current Area



Current Design



---

## Discussion

### Enfield Fire Hall

The Enfield Fire Department has hired Colliers project managers to complete a rebuild of their fire hall. The road access and location for the truck bays has shifted the crosswalk location to the north side of John Murray Drive, versus the original plan of the south side. Where this is not a municipal project, there is no direct path for official updates on that project, which makes the crossing being at the north side of John Murray Drive the best option for eliminating more design changes.

Staff also became aware this summer of a potential change to the services provided at the Fire Hall. The location currently is host to a large rental space that has been used for events such as; wedding receptions, parties, community bingo and large training events, etc. The historical public use was one of the main focal points for enabling safer pedestrian crossing in this general area of Highway 2. There have been unconfirmed comments made from those working on the Fire Hall project that the hall space will be significantly reduced. There is no confirmation on detail regarding magnitude or scope of changes to site usage, however any major change could impact public perception regarding the need for a crossing.

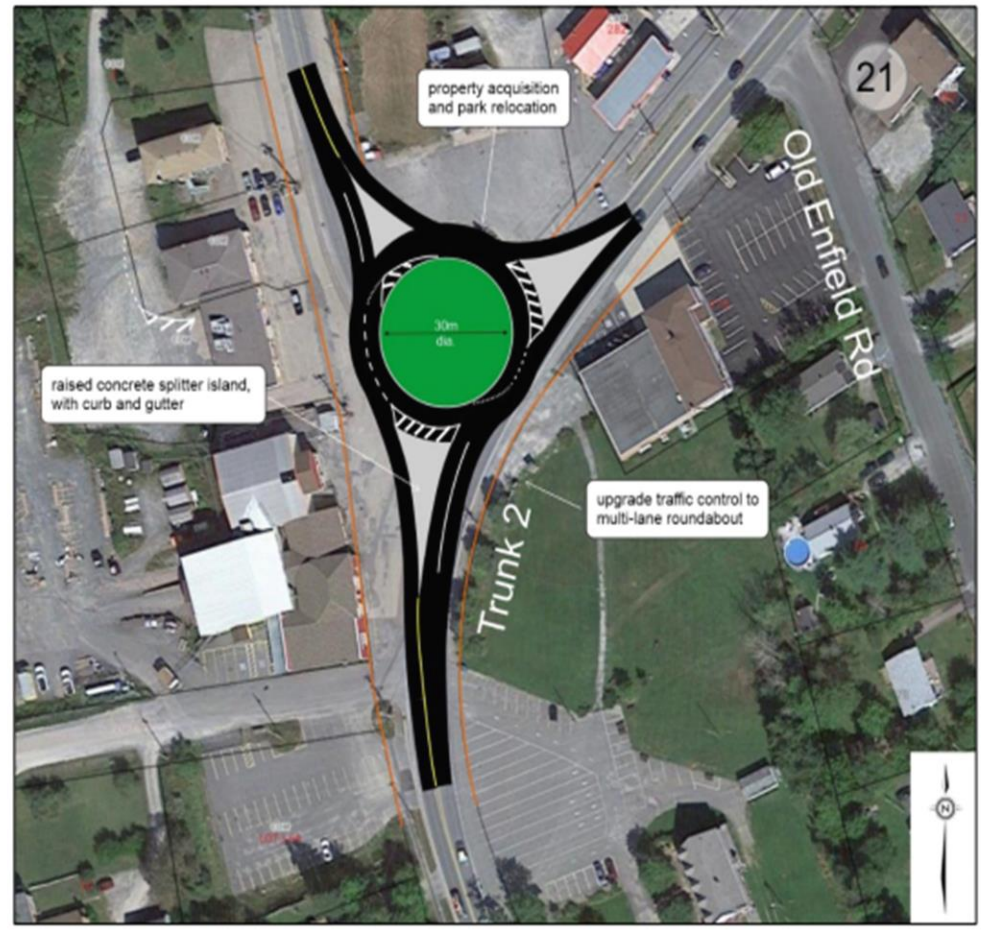
The Fire Hall must also receive road access approval from the Province with respect to any planned changes as to how the parking and driveway areas of the site will access provincial roads. This could result in further changes to the Fire Hall project design.

### Intersection of Highway 2 and Old Enfield Road

On August 21, 2024, the Province gave the Municipality access to a transportation study completed by Griffin Consulting in March 2024, which focused on identifying all major intersection upgrade requirements along Highway 2 and other major provincial roads within the communities of Enfield, Elmsdale and Lantz.

On page 44 of the study, there is a visual of the recommended upgrade to the intersection at Highway 2 and Old Enfield Road. The design is for a roundabout with the potential to incorporate a pedestrian crossing, which has not been a consideration at that location historically due to the complexity of the current “T” intersection. There is no confirmed timeline for such a project, nor is there a financial commitment to proceed with such a project at the intersection. That said, in “Table 17” of the report (page 54), it shows this intersection as having the worst rating of any of the locations reviewed. This may prompt it to become a priority of the Province sooner than other improvement opportunities explored within the report.

Figure 24: 2043 Upgrades – Intersection #21 Old Enfield Road



**\$1,437,200** implementation cost estimate (Class D, 2023 dollars)

**Table 17: Signal Warrant Analysis Results – Road Option 2 Network**

| No. | Main Road       | Secondary Road   | Option 1 - Existing Roads |            | Option 2 - North I/C   |               |
|-----|-----------------|------------------|---------------------------|------------|------------------------|---------------|
|     |                 |                  | Equilibrium Assignment    |            | Equilibrium Assignment |               |
|     |                 |                  | 2033                      | 2043       | 2043                   | Unconstrained |
| 1   | Trunk 2         | Milford Rd       | 24                        | 25         | 48                     | 62            |
| 2   | Trunk 2         | FH Street A      | 20                        | 43         | 73                     | 180           |
| 3   | Trunk 2         | Wickwire North   | 38                        | 76         | 107                    | 212           |
| 4   | Trunk 2         | Wickwire South   | 131                       | 266        | 210                    | 380           |
| 5   | Trunk 2         | Frederick Allen  | 67                        | 94         | 57                     | 76            |
| 6   | Trunk 2         | Poplar           | 72                        | 98         | 75                     | 99            |
| 7   | Trunk 2         | Rte 277 / Logan  | 128                       | 194        | 153                    | 210           |
| 8   | Trunk 2         | Church           | 27                        | 36         | 27                     | 33            |
| 9   | Trunk 2         | Lantz Connector  | Roundabout                | Roundabout | Roundabout             | Roundabout    |
| 10  | Lantz Connector | Shaw Dr          | Roundabout                | Roundabout | Roundabout             | Roundabout    |
| 11  | Lantz Connector | Hwy 102 NB Ramps | Roundabout                | Roundabout | Roundabout             | Roundabout    |
| 12  | Lantz Connector | Hwy 102 SB Ramps | Roundabout                | Roundabout | Roundabout             | Roundabout    |
| 13  | Route 214       | Trunk 2          | Signals                   | Signals    | Signals                | Signals       |
| 14  | Route 214       | Mason Dr         | Signals                   | Signals    | Signals                | Signals       |
| 15  | Route 214       | Hwy 102 NB Ramps | Signals                   | Signals    | Signals                | Signals       |
| 16  | Route 214       | Hwy 102 SB Ramps | 244                       | 266        | 266                    | 338           |
| 17  | Route 214       | Park Rd          | Signals                   | Signals    | Signals                | Signals       |
| 18  | Trunk 2         | Elmwood          | 124                       | 135        | 135                    | 147           |
| 19  | Trunk 2         | Alderney         | 83                        | 89         | 89                     | 97            |
| 20  | Trunk 2         | Shamrock         | 33                        | 37         | 37                     | 41            |
| 21  | Trunk 2         | Old Enfield Rd   | 272                       | 323        | 323                    | 491           |

The future ability to add a pedestrian crossing at a roundabout could change the current demand for the crossing intended to be installed at John Murray Drive through capital budget Project 21-033.

## Alternatives

### Complete the construction of the crosswalk

This path forward would complete the project as intended in the capital budget.

### Cancel the remainder of the project

This will result in the project not posting a tender for construction. The design work already completed would remain on file for several years in case circumstances change.

\*\*\*Of note, there is work required within this scope that would need to be completed in another project to replace large sections of sidewalk along Highway 2 in the coming years. Cancelling the crosswalk project will defer some costs to that other sidewalk replacement work.