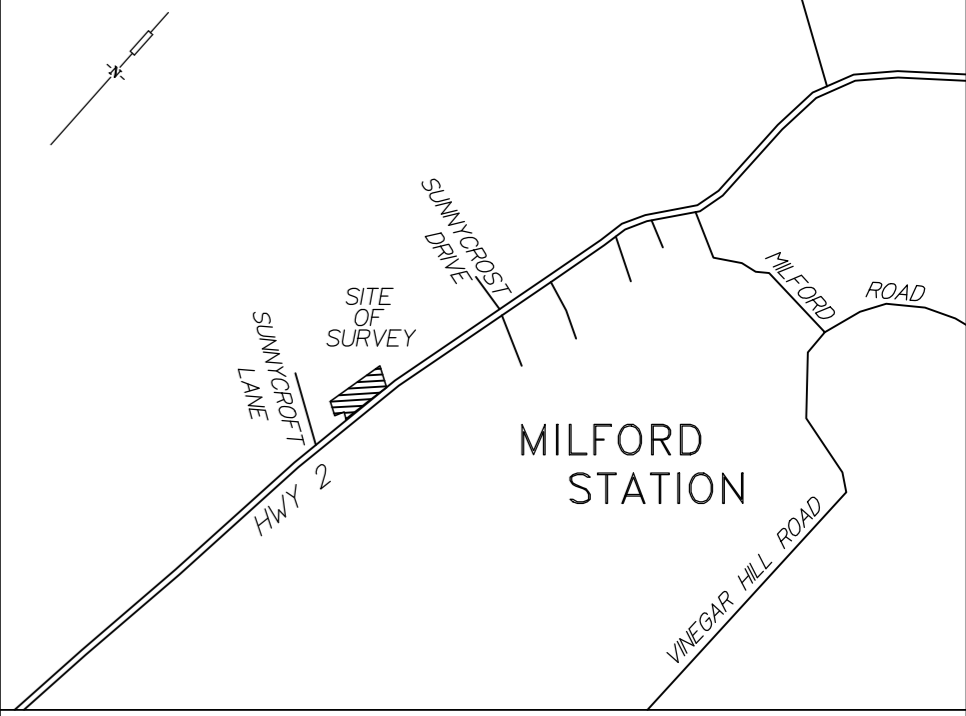
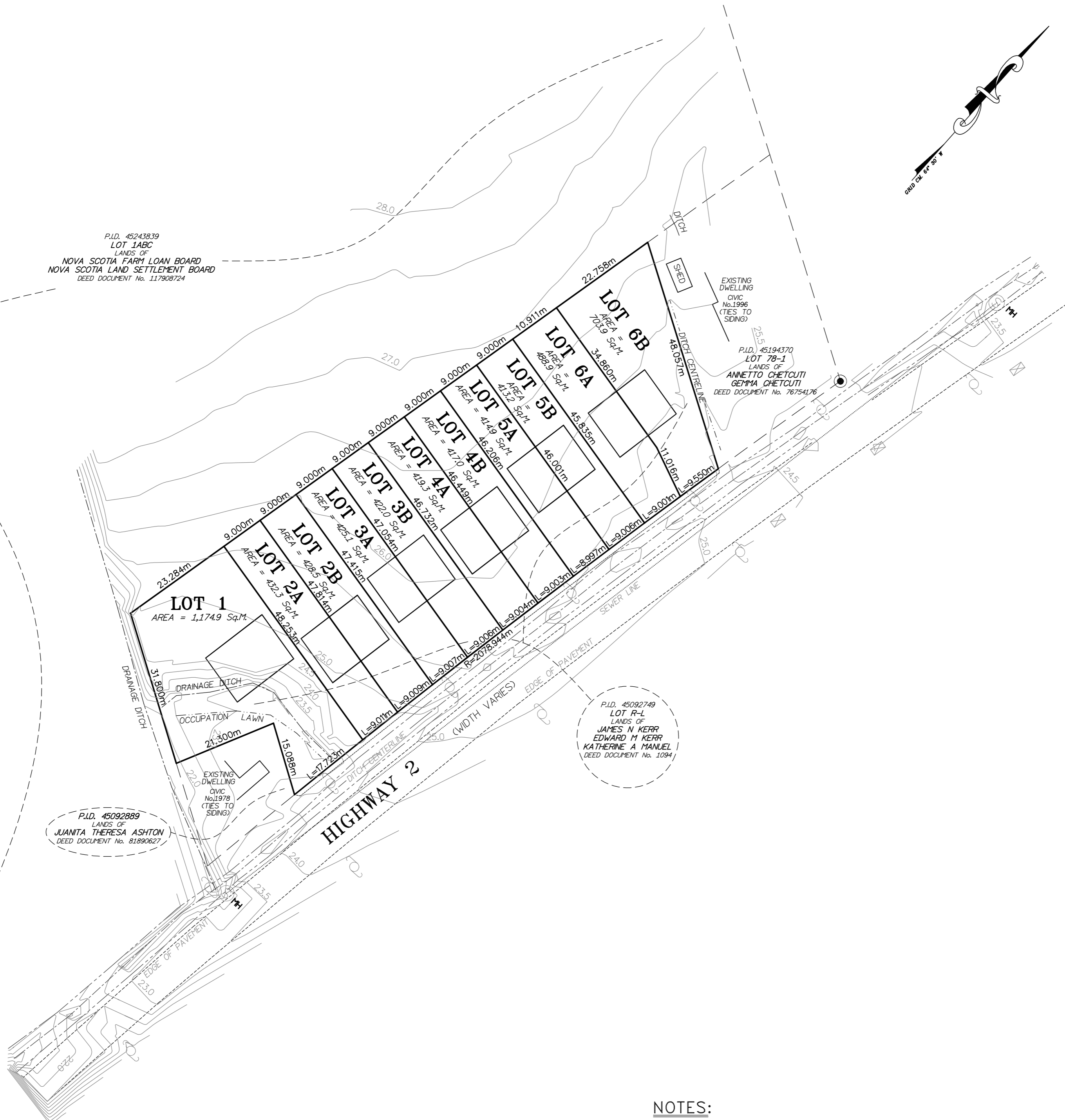


P.I.D. 45243839
 LOT 1ABC
 LANDS OF
 NOVA SCOTIA FARM LOAN BOARD
 NOVA SCOTIA LAND SETTLEMENT BOARD
 DEED DOCUMENT No. 117908724

P.I.D. 45092889
 LANDS OF
 JUANITA THERESA ASHTON
 DEED DOCUMENT No. 81890627

P.I.D. 45092749
 LOT R-L
 LANDS OF
 JAMES N KERR
 EDWARD M KERR
 KATHERINE A MANUEL
 DEED DOCUMENT No. 1094

P.I.D. 45194370
 LOT 78-1
 LANDS OF
 ANNETTO CHETCUTI
 GEMMA CHETCUTI
 DEED DOCUMENT No. 76754176



LEGEND:

LANDS DEALT WITH BY THIS SURVEY	△ N.S.C.M.
NOVA SCOTIA CO-ORDINATE MONUMENT	⊙ S.M.
SURVEY MARKER	● R.P.
ROCK POST	○ I.B.
IRON BAR	⊙ I.P.
IRON PIPE	⊙ (N.T.S.)
FOUND, WITNESS, NOT TO SCALE	Fd., Wit. (N.T.S.)
PLAN, DEED	(P), (D)
CALCULATED FROM FIELD MEASUREMENTS	calc.
ORDINARY HIGH WATER MARK	O.H.W.M.
TIE LINE, TOTAL	(T/L) (T)
BEGINNING OF CURVE, END OF CURVE	B.C., E.C.
POINT OF COMMON CURVATURE, POINT OF REVERSE CURVATURE	P.C.C., P.R.C.
RADIUS, ARC, CHORD	R, A, C
BUILDING	▭
POWER POLE, MANHOLE	⊕ P.P., ⊕ M.H.
FIRE HYDRANT, CATCH BASIN	⊙ F.H. □ C.B.

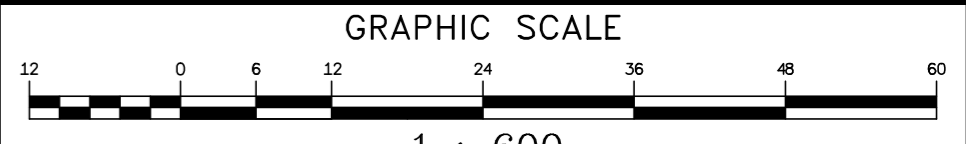
GNSS SURVEY TYPE:	NRTK	SOURCE:	CanNet
COORDINATE SYSTEM INFORMATION			
HORIZONTAL DATUM:	NAD83 (CSRS)	EPOCH:	2010.0
VERTICAL DATUM:	CGVD2013	CALCULATED OFFSET BETWEEN CGVD28/CGVD2013	
M.T.M. ZONE 5 CENTRAL MERIDIAN 64° 30'			

PRELIMINARY PLAN OF SUBDIVISION OF
 LOTS 1, 2A, 2B, 3A, 3B
 4A, 4B, 5A, 5B, 6A AND 6B
 BEING A SUBDIVISION OF
 P.I.D. 45092749 (LOT R-L),
 LANDS CONVEYED TO
JAMES N KERR,
EDWARD M KERR,
 AND
KATHERINE A MANUEL
 HIGHWAY 2, MILFORD STATION,
 HANTS COUNTY, NOVA SCOTIA



DATE: AUG 28, 2023

CIVTECH ENGINEERING & SURVEYING LIMITED
 P.O. Box 3237, D.E.P.S., DARTMOUTH
 NOVA SCOTIA, B2W 5G2, 434-4600



NOTES:
 1. MUNICIPAL SANITARY SERVICES ARE AVAILABLE FOR EACH PROPOSED LOT

No.	REVISION/REMARKS	DATE	SCALE:
			1:600
DRAWN BY: D.E. & K.S.		CHECKED BY: T. GIOVANNETTI	23172PRE