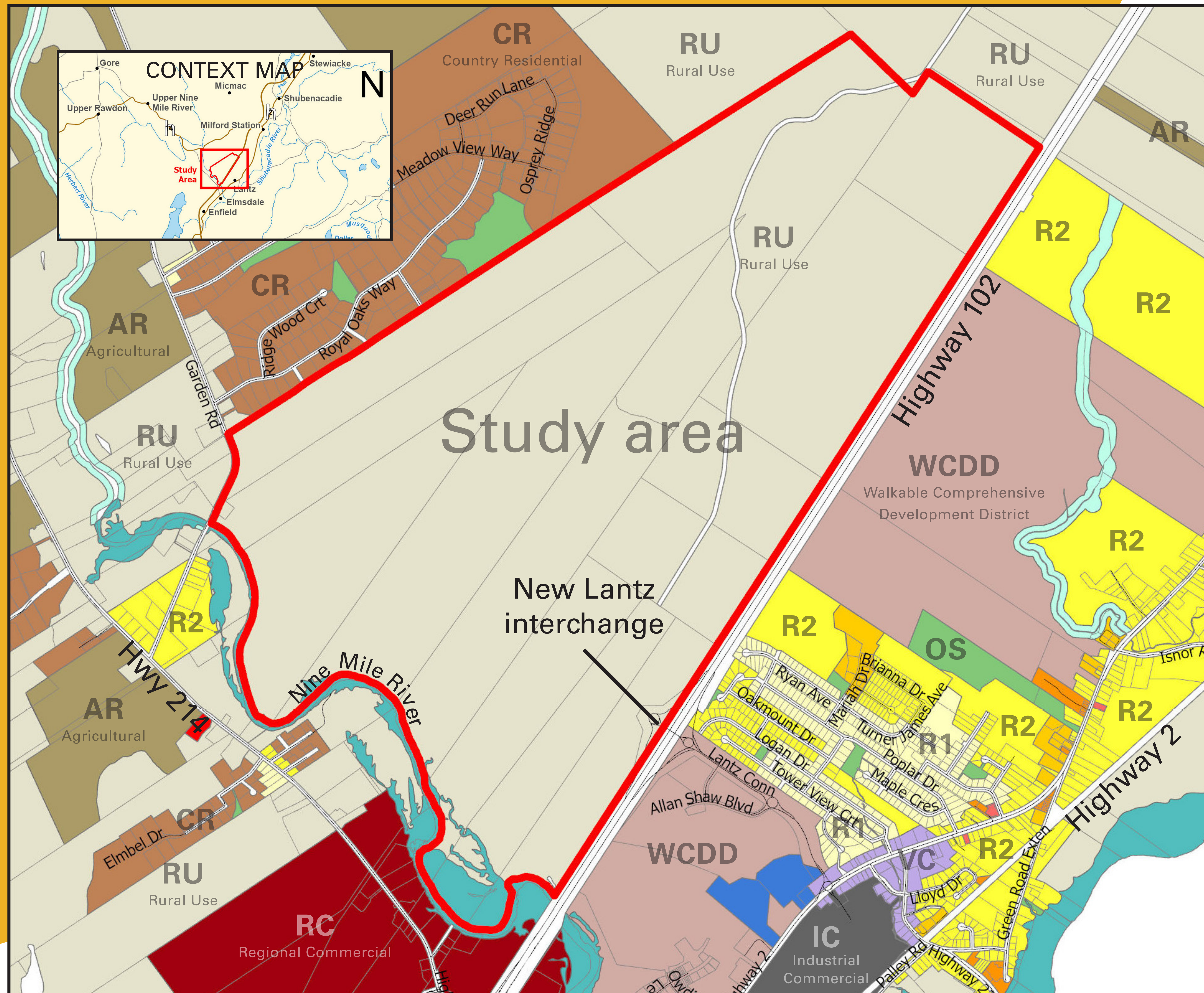


# Welcome!



Study area map with current zoning

The Municipality of East Hants is creating a Secondary Planning Strategy for an area of largely undeveloped land to the west of the new Lantz Highway 102 Interchange.

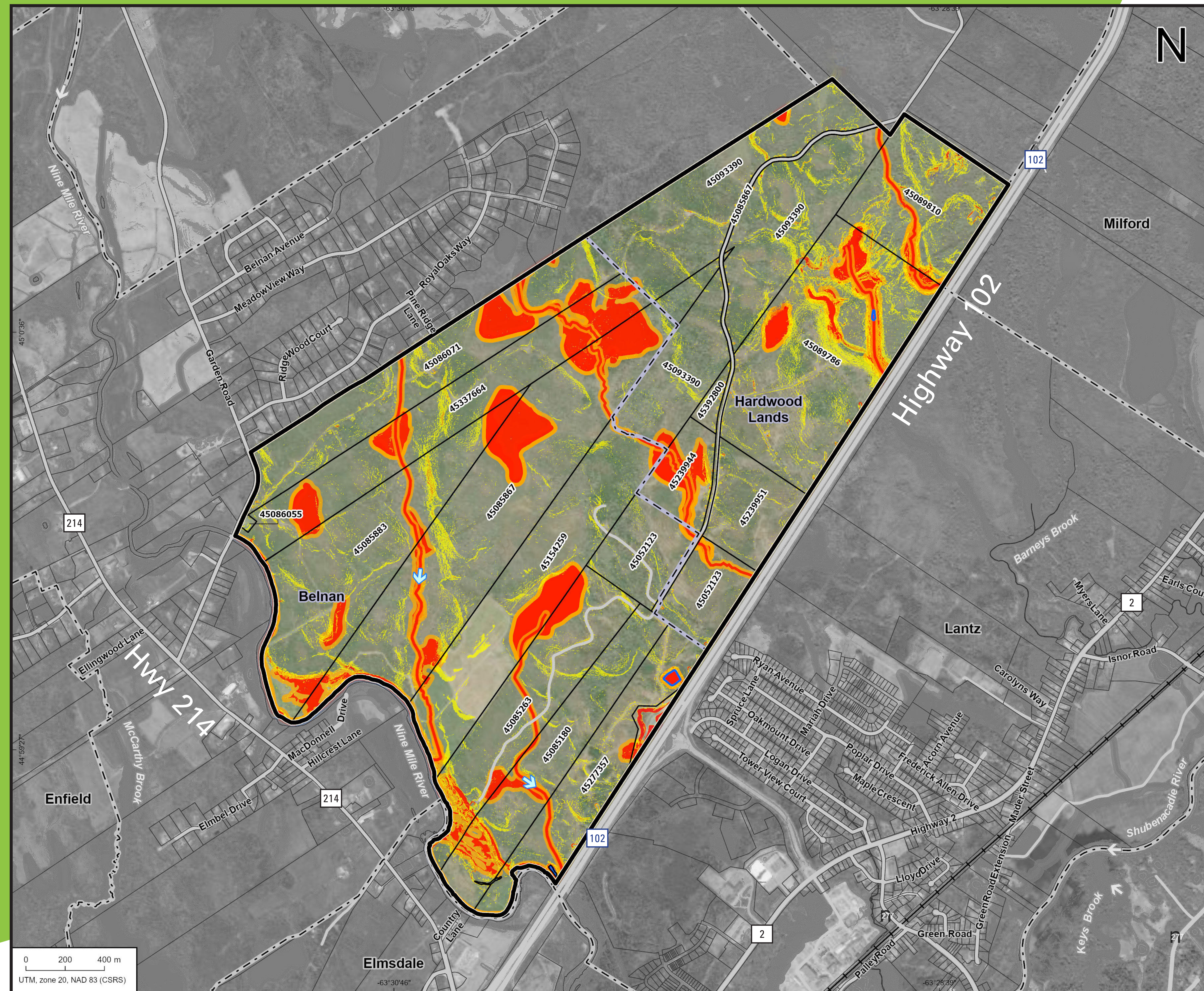
A secondary plan contains policies and zoning regulations in an area of the Municipality where major changes are expected and desired.

Having a plan in place will lead to a better design for the community and help the municipality consider what infrastructure is needed for the land to be developed in the future.

The project team, including planning consultant FBM and engineering company Englobe, are here to introduce the project, answer questions, and explore what this area could look like in the future.



# Phase 1 research



The project team is examining potential constraints and opportunities. Initial desktop research suggests the site contains watercourses and wetlands that limit development potential. The area may also be home to sensitive habitats or protected species of plant and animal life. High-level, preliminary findings are presented in this map.

### Project Components

- Study Area
- Properties in the Study Area
- Surrounding Properties
- Community Boundaries
- Parcel Identifier Number (PID) in the Study Area  
**45093390**

### Developability

- High Development Constraints
- Medium Development Constraints
- Low Development Constraints

### Hydrography

- Waterbody
- Watercourse
- Flow Direction

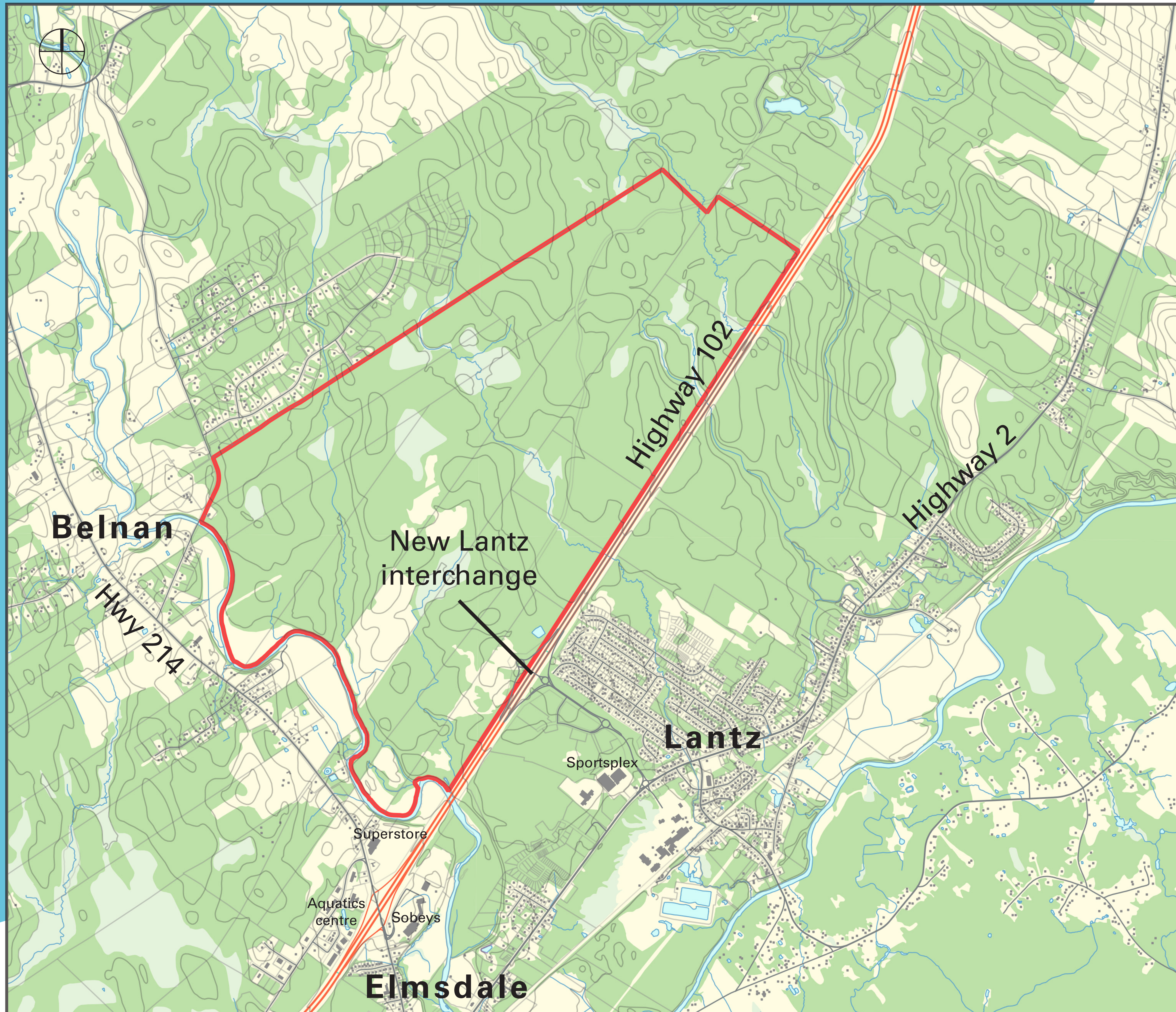
### Infrastructure

- Highway
- Collector Road
- Local Street
- Railway

Preliminary site analysis map



# Share your thoughts



Talk to us about:

- What are the current needs in the communities surrounding the study area?
- What opportunities exist for the Lantz study area to meet the needs of present and future residents over the next 20 years?
- What land uses (e.g. housing, commercial, environmental protection, etc.) should be prioritized in the Lantz study area?
- What potential infrastructure connections exist in the Lantz study area?
- What is your vision for the Lantz study area?